



Estate Agents



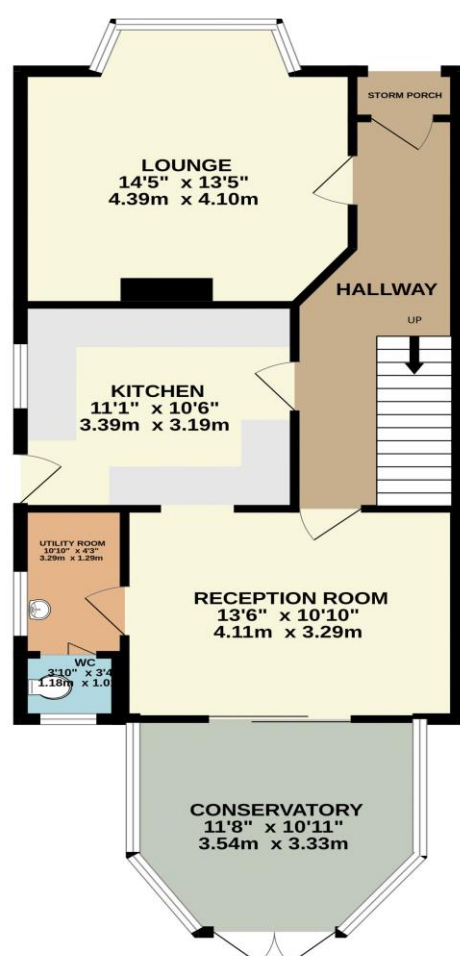
Auctioneers

£500,000

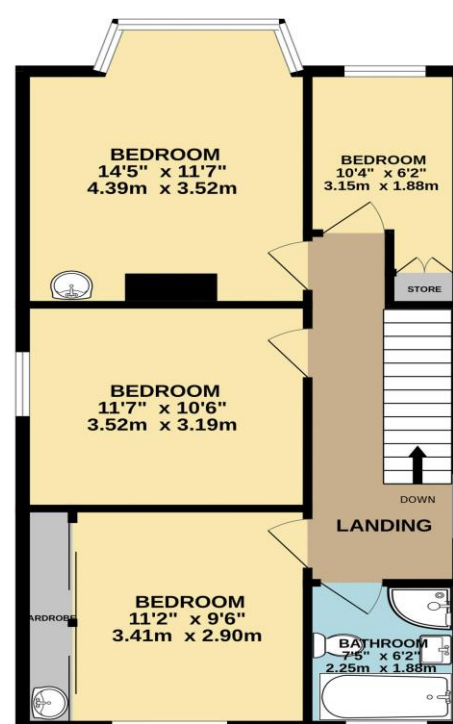
A bright, modern bedroom with a large bed, a window, and a glass partition. The bed has a wooden frame and is covered with a white duvet and pillows featuring a black floral pattern. A window with a white frame is positioned above the head of the bed, offering a view of the outdoors. A black pendant light hangs from the ceiling. To the right, a glass partition with a black frame separates the bedroom from another area, where a similar bed and a wooden nightstand are visible. The floor is made of light-colored wood.

A bright and airy living room with light-colored walls and a wooden floor. The room features a dark wood fireplace with a white mantel, a large brown leather sofa, a wooden coffee table, and a blue patterned rug. A television is visible on a stand in the background.

GROUND FLOOR
718 sq.ft. (66.7 sq.m.) approx.



1ST FLOOR
608 sq.ft. (56.5 sq.m.) approx



TOTAL FLOOR AREA : 1327 sq.ft. (123.2 sq.m.) approx.

Whilst every attempt has been made to ensure the accuracy of the floorplan contained here, measurements of doors, windows, rooms and any other items are approximate and no responsibility is taken for any error, omission or mis-statement. This plan is for illustrative purposes only and should be used as such by any prospective purchaser. The services, systems and appliances shown have not been tested and no guarantee as to their operability or efficiency can be given.

Mersey City Metrics ©3122



t 01202 424214

e southbourne@richardgodsell.com

w richardgodsell.com

Disclaimer
These particulars, whilst believed to be accurate are set out as a general outline only for guidance and do not constitute any part of an offer or contract. Intending purchasers should not rely on them as statements of representation of fact, but must satisfy themselves by inspection or otherwise as to their accuracy. We have not carried out a detailed survey nor tested the services, appliances and specific fittings. Room sizes should not be relied upon for carpets and furnishings. The measurements given are approximate. No person in this firm's employment has the authority to make or give any representation or warranty in respect of the property.